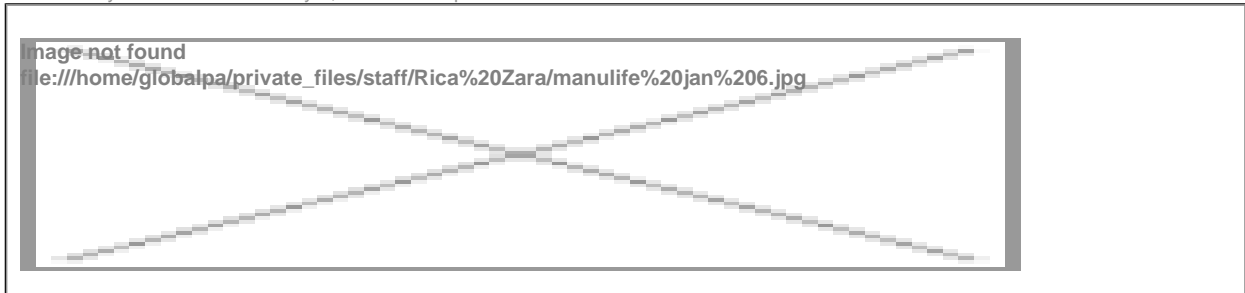




GLOBAL PACIFIC  
FINANCIAL SERVICES LTD.

## Manulife Investments - Fund Recommendations for RSP/TFSA Season

Submitted by Rica Zara on January 6, 2022 - 12:32pm



Good morning and happy new year! I hope you enjoyed a healthy and lovely holiday season. To kickstart the new year, please find below our fund recommendations for the 2022 RRSP/TFSA season. Attached are fund codes as well as a master list of ?reasons why? for each fund. Please contact us if you have questions on HNW pricing or our dollar cost averaging Series.

### Low risk

Image not found

file:///home/globalpa/private\_files/staff/Rica%20Zara/manulife%20jan%206%20a.jpg

## Low to medium risk

Image not found

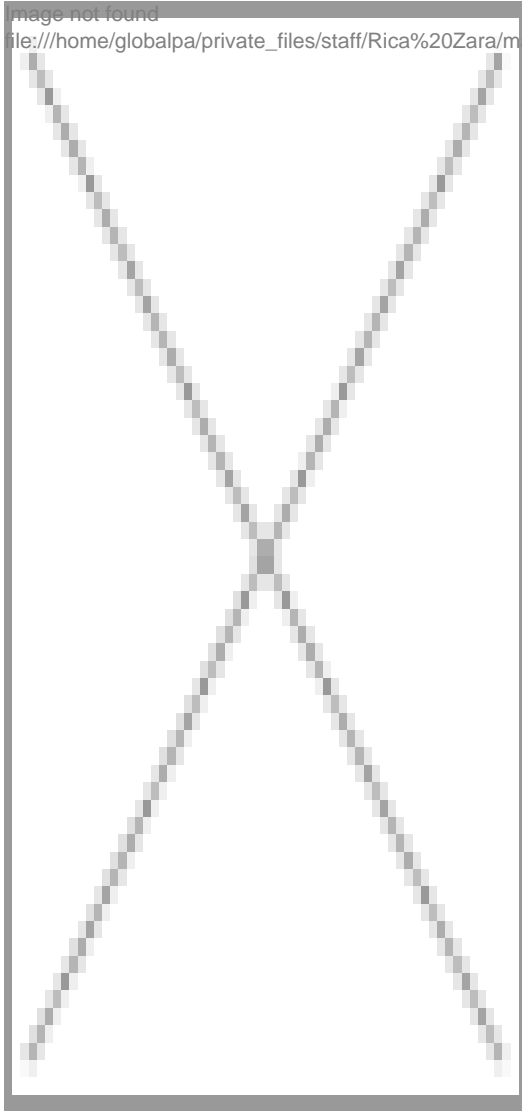
file:///home/globalpa/private\_files/staff/Rica%20Zara/manulife%20jan%206%20b.jpg

**Medium risk**

Image not found  
file:///home/globalpa/private\_files/staff/Rica%20Zara/manulife%20jan%206%20c.jpg

**Medium to high risk**

image not found  
file:///home/globalpa/private\_files/staff/Rica%20Zara/manulife%20jan%206%20d.jpg



Wishing you a healthy, happy and prosperous 2022!

Attachment	Size	Type
<a href="#">Mutual Fund Codes.pdf</a>	495.67 KB	application/pdf
<a href="#">Reasons Why - Master List.docx</a>	28.1 KB	application/vnd.openxmlformats-officedocument.wordprocessingml.document
<a href="#">Seg Fund Codes.pdf</a>	95.18 KB	application/pdf

Source URL: <https://www.globalpacific.ca/bulletins/manulife-investments/2022-01-06/manulife-investments-fund-recommendations-rsptfsa-season>